

**STEP
TO THE
FUTURE**



Opportunity Day
Year 2021 Performance

7 April 2022

Basic Information



verview

The main business of ECF is to be a manufacturer, wholesaler, and also distributor both domestic and international for furniture made from particleboard, MDF, rubberwood, and furniture-related materials such as processed and dried rubberwood, surfaced-decorating paper.

Furniture Products:

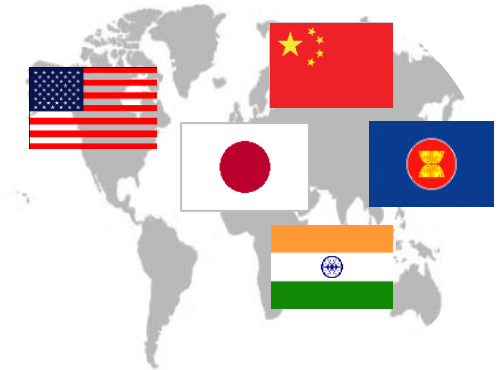
- Particleboard
- MDF
- Rubberwood
- Surfaced-decorating Paper
- Processed and dried rubberwood



Main Customers: Domestic 39%



Oversea 61%



Other Businesses

- **Energy Business**
- Solar Power Plant



Online Platform



ECFH



Cryptocurrency Mining

VV Rich



Agricultural Business

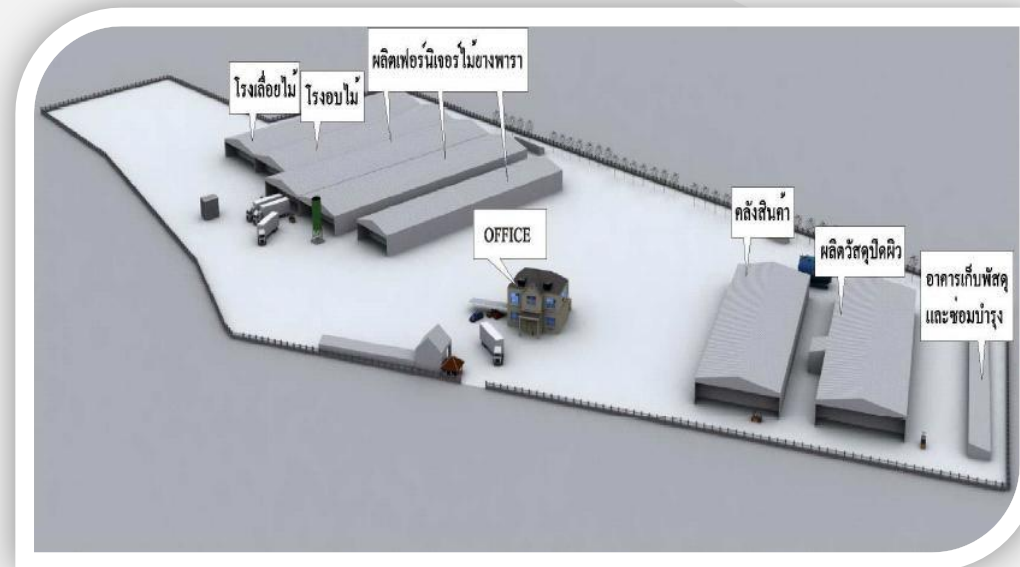
Factory 1

Klaeng, Rayong : Factory for particle board furniture (Total area 43 rai)



Factory 2

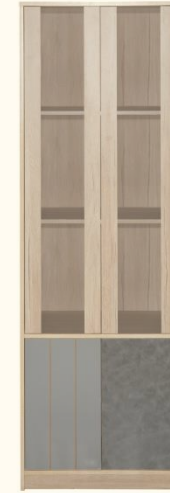
Wangchan, Rayong : Factory for rubber wood furniture and foil paper (Total area 54 rai)

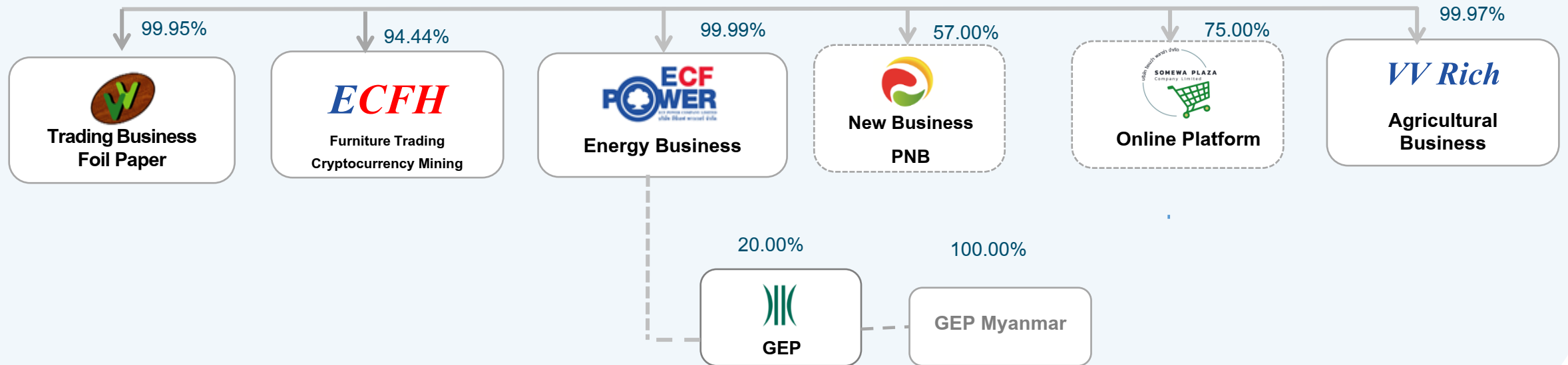


Marketing Office and Warehouse

Lamlukka Klong 5, Pathumthani : Marketing office and warehouse for showroom and dealers (Total area 2 rai)

Our Products





- **VV-Décor:** VV Décor Co.,Ltd.
A distributor of foil paper
- **ECFH:** ECF Holdings Co.,Ltd.
A distributor of furniture and cryptocurrency mining business
- **ECF-P:** ECF Power Co.,Ltd.
An Investor to renewable energy business

- **PNB:** Planet Board Co.,Ltd.
Looking for a new business to invest
- **GEP:** Green Earth Power (Thailand) Co.,Ltd.
Solar Power Plant, 220 MW, Myanmar, has started COD 50 MW for 1st phase since 2019.

- **SMW:** SoMeWa Plaza Co.,Ltd.
Online Platform
It has not started the commercial operation.
- **VVR:** VV Rich Co.,Ltd.
Agricultural Business
It has not started the commercial operation.

Highlight of Operating Performance Year 2021



Highlight of Operating Performance Q4.2021 & Year 2021

**Consolidated

Q4/2021

Total Revenue

THB 445 million
increased
5.47%YoY or
29.88%QoQ

EBITDA

THB 96.88 million
increased 9.60%YoY

Profit Owners of the Parent

THB 15 million
increased
286.56%YoY

12M/2021

THB 1,601 million
increased
13.08%YoY

THB 231.93 million
increased 4.28%YoY
14.49% of Total Revenues

THB 51 million
increased
23.54%YoY

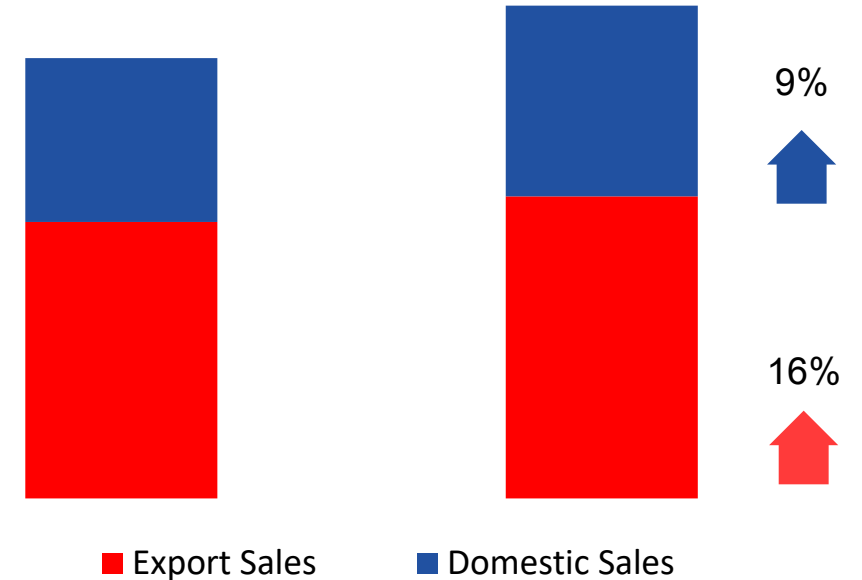
NP margin 3.18%
increased from
2.91% in Y2020

Highlight of Operating Performance Q4.2021 & Year 2021

Year 2021 Total Revenues **13.08% YoY**

Baht 1,600.80 million

- ❑ Sales Portion : Export 61% Domestic 39%
- ❑ Domestic Sales +9% growth rate
- ❑ Export Sales +16% growth rate
- ❑ Japan Sales -2.45% growth rate
- ❑ Thailand's Wooden Furniture Export Sales (USD)
 - ❑ Y2021 : +17.59%,
- ❑ Thailand's Furniture and Parts Sales to Japan Market (USD)
 - ❑ Y2021 : +8.22%



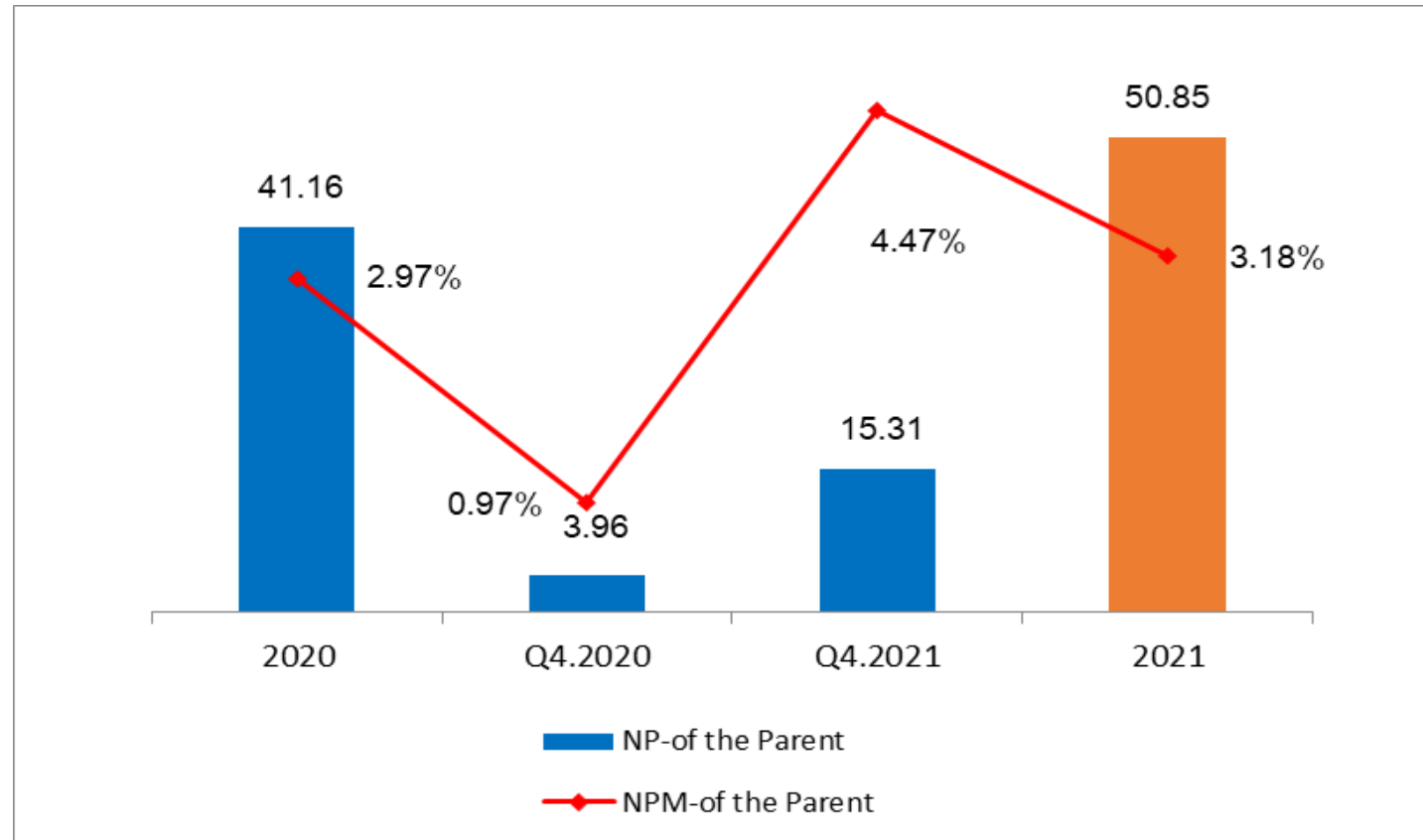
Highlight of Operating Performance Q4.2021 & Year 2021

Q4.2021 Net Profit-Owners of the Parent
286.56% YoY

Baht 15.31 million

Year 2021 Net Profit-Owners of the Parent
23.54% YoY

Baht 51.85 million



Highlight of Operating Performance Q4.2021 & Year 2021

Minbu Solar Power Plant, Myanmar : Share of Profit from Investment

Phase
1



Phase
2



220 MW_{DC} Minbu Solar Power Plant Phase 1 (50MW_{DC})

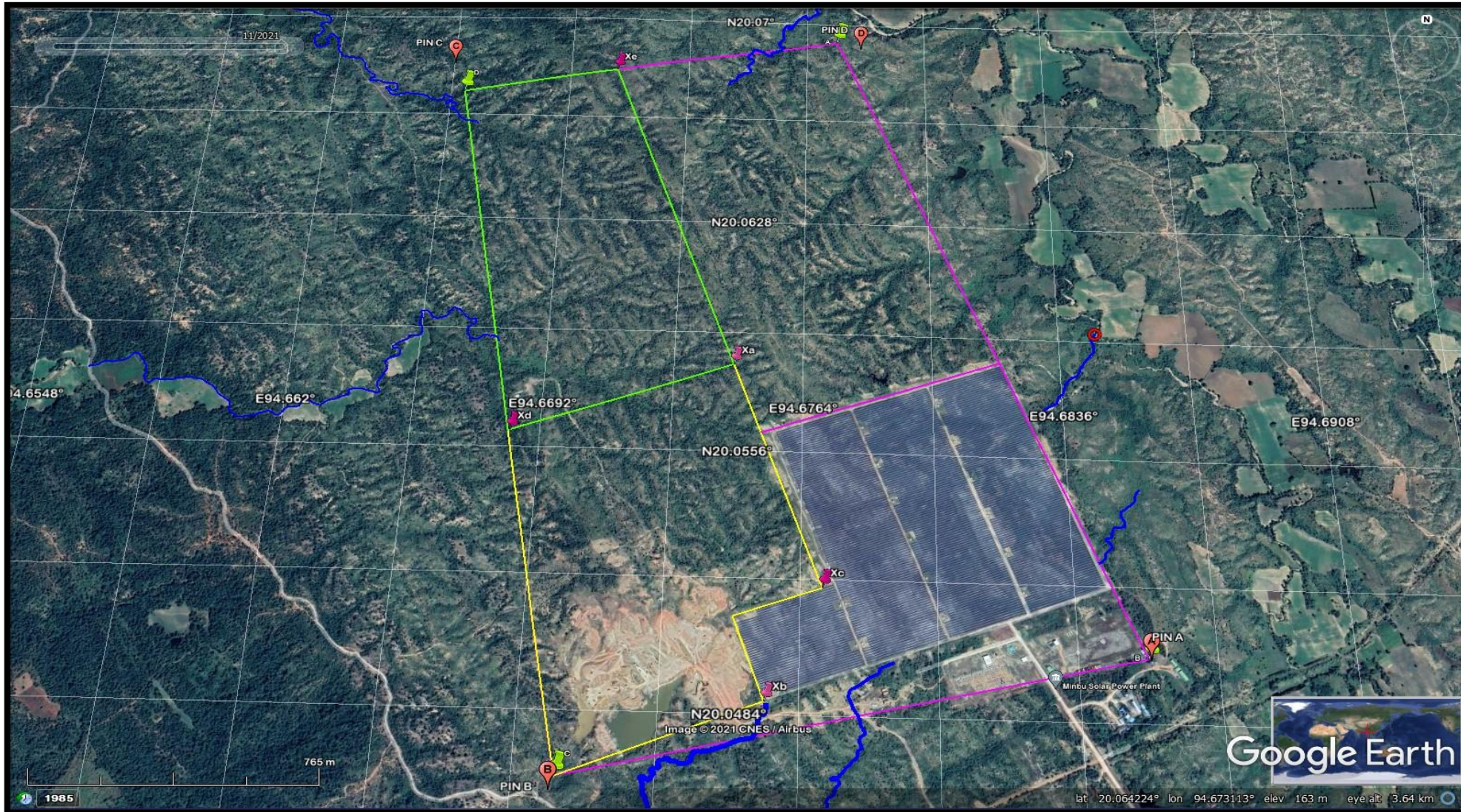


State-of-the-Art Technology with Trusted Manufacturers Assuring Plant's Reliability

- Phase 1 constructed over 160 Acres
- 160,000 PV Panels Top Tier Brand - Jetion
- European-made Transformer – Siemens
- European-made Inverters - SMA

First Solar PV Plant in Myanmar with the Substation being One of the Largest in the Country

➤ Project Status and Development Plan for Phase 2-4
❖ Overview of all 4 Phases



➤ **Project Status and Development Plan for Phase 2-4**



❖ **Grading Work Progress Summary as of January 2022**



Surface Cleaning Work (Area 1-6) – Overall Progress 100% as of 6 Jan 2022



Cutting and Filling (Area 1-6) – Overall Progress 100% as of 20 Jan 2022



Compaction (Area 1-6) – Overall Progress 100% as of 22 Jan 2022

**Note: Due to the limitation of general drone safety flight instruction (flight altitude about 150-200m), drone couldn't fly higher than this.

- **Project Status and Development Plan for Phase 2-4**
 - ❖ **Grading Work Progress Summary as of January 2022**



**Note: Due to the limitation of general drone safety flight instruction (flight altitude about 150-200m), drone couldn't fly higher than this.

- **Project Status and Development Plan for Phase 2-4**
 - ❖ **Grading Work Progress Summary as of January 2022**



**Note: Due to the limitation of general drone safety flight instruction (flight altitude about 150-200m), drone couldn't fly higher than this.

Forward Looking





Backlog

New Domestic Customer

New Export Customer

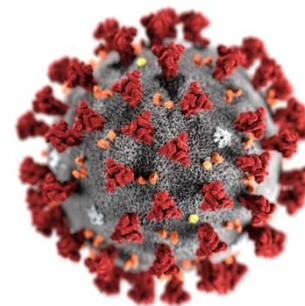
**Online Platform
Crypto Mining
Agricultural Business**

**MSPP Project
Phase 2 3 and
4 Status**

**Target Growth
of Y2022**

COVID-19

**Shortage of
Containers**



“Committed to maintain the stability and strength in the furniture business, to create business growth opportunities and to continuously seek opportunities to expand into other businesses for sustainability.”

Q&A

**Q4 & Y2021
Performance**





Thank You

 Investor Relations

 +662-152-7301-4 ext.212 or 202

 ir@eastcoast.co.th

 www.eastcoast.co.th

